

The monthly update for NHS organisations in the West Midlands



In this issue

- ⇒ 2014/15 Programme update
- ⇒ Timing issues
- ⇒ What happens if our programme isn't agreed?
- ⇒ Designation of urgent care facilities
- ⇒ New Quality Standards
- ⇒ Standards development work—opportunity to participate
- ⇒ Other work

2014/15 Programme Update

Most health economies have now either fully or partially agreed their review programme. Planning and scoping meetings are being arranged where topics have been agreed.

Key: TACIC: Transfer from Acute Hospital Care and Intermediate Care
CIC: Care of critically ill and injured children

CAMHS: Emotional health & -being for children & young people

North Staffordshire: Paediatric long-term ventilation service review visit, TACIC review visit, Theatres & Anaesthetics review visit. Dates to agreed. Outstanding query on services for people with learning disabilities

Dudley: TACIC review visit on 3 & 4 March. Day case surgery review visit on 13 February. WMQRS awaiting confirmation of work on end of life care

South Staffordshire West: TACIC review visit agreed by commissioners. Awaiting confirmation of provider support. Participation in Standards development work as time allows

Walsall: TACIC review visit on 3 & 4 February. WMQRS awaiting confirmation regarding chronic pain service review visit

East Staffordshire: TACIC review visit date on 20 & 21 January

Wolverhampton: TACIC review visit on 21 & 22 April.

South East Staffs & Seisdon: Participation in Standards development work as time allows. Additional WMQRS capacity available if required

North & East Birmingham (CrossCity): TACIC review visit. Revised date to be confirmed.

Shropshire and Telford & Wrekin: CIC visit agreed. Date still to be agreed. Support for Future Fit work also agreed. Additional WMQRS capacity available if required.

South & Central Birmingham: TACIC review visit, chronic pain services review visit. Dates to be confirmed. Alcohol Pathway Quality Standards development.

Herefordshire: CAMHS review visit 9th December. TACIC review visit 24 & 25 March

Sandwell & West Birmingham: TACIC review dates agreed: 10 & 11 Feb, CIC review dates agreed 28 & 29 Jan. Alcohol Pathway Quality Standards development. CAMHS review took place 8 July and report finalised.

Worcestershire: CAMHS review visit 23 & 24 February. TACIC review visit on 16, 17, 18 Mar. WMQRS awaiting confirmation regarding other aspects of work programme.

Solihull: Enhanced Primary Care Quality Standards finalised. TACIC review visit. Revised date to be confirmed. Awaiting confirmation of further work on primary care services.

South Warwickshire: CAMHS review took place 15 & 16 July. Report finalised. CIC review took place 21 October. Eye Care Quality Standards first draft complete

Coventry & Rugby and North Warwickshire: CAMHS review took place 14 & 16 July. Report finalised. Eye Care Quality Standards first draft completed. WMQRS awaiting confirmation regarding TACIC and Community Mental Health Teams review visits and work on maternity and musculoskeletal services.

Timing Issues: This year's WMQRS work programme is heavily weighted to Quarter 4. It is important that any remaining topics for review are agreed urgently if review visits are to be carried out by the end of March. WMQRS needs a minimum of six weeks to book review teams of appropriate peers in addition to time to meet with services to plan and scope the reviews.

Standards Development:

Alcohol Pathway: Standards Development Group being formed. First meeting being arranged in December

Frail Older People: Steering Group being formed. First meeting takes place 16th January 2015.

Commissioned Reviews

WMQRS has been commissioned to undertake a variety of reviews in addition to the main West Midlands review program

Isle of Man Health Services: The Isle of Man Department of Health and Social Care has commissioned WMQRS to undertake a rolling programme of reviews of the Isle of Man health services. Four reviews have taken place since November 2013:

- ⇒ Care of Adults in Emergency Department, Theatres & Anaesthetics and Critical Care Services
- ⇒ Acute Medical Admissions and Care of People with Long-Term Conditions
- ⇒ Clinical Governance
- ⇒ Cancer & Surgical Specialties

Adult and Children Haemoglobin Disorders: commissioned by the UK Forum on Haemoglobin Disorders.

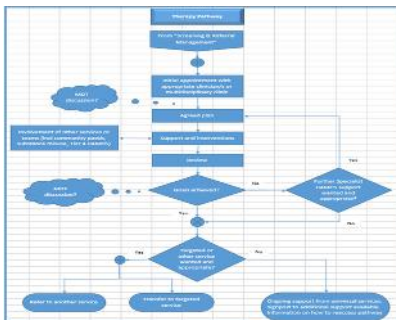
WMQRS has also been commissioned to undertake additional reviews of care of critically ill children, Emergency Department theatres and anaesthetic services in a hospitals within and outside the West Midlands

If you are interested in commissioning work from WMQRS, please contact claire.launders@nhs.net

New Quality Standards

Several sets of new Quality Standards are now available at www.wmqrs.nhs.uk

- Health Services for People with Haemoglobin Disorders
- Generic Patient Pathway
- Care of Adults with Acquired Brain Injury
- Care of People with Chronic Pain
- Transfer from Acute Hospital Care and Intermediate Care
- Enhanced Primary Care



Standards Development Work—Opportunity to Participate

WMQRS is developing Quality Standards in the following areas:

- Eye Care
- Problem Alcohol Use Pathway
- Frail Older People

Please contact claire.launders@nhs.net if you are interested in being involved in this work

WMQRS is being reviewed!

WMQRS is working towards accreditation by Tl UK Accreditation Service (UKAS), the national body with responsibility for standards and accreditation. If successful this will give assurance of the quality of the work we undertake.



Urgent Care Designation

CCGs are now responsible for designating urgent care facilities. Using WMQRS Quality Standards and reviews may provide the information you need for this. Urgent Care Standards are being updated to reflect the revised guidance.

Become a reviewer?

WMQRS is actively recruiting reviewers for the 'Transfer from Acute Hospital Care and Intermediate Care' review programme for 'Towards Emotional Health and Well-Being for Children and Young People' (CAMHS). Being a reviewer is CPD for NHS staff and over 80% reviewers make improvements to their own services as a result of the learning gained on WMQRS visits. We are also actively recruiting patient and carer reviewers!

Please contact sue.mcildowie@nhs.net if you are interested in becoming a WMQRS reviewer.

0121 507 2891

www.wmqrs.nhs.uk



follow us @ wmqrs