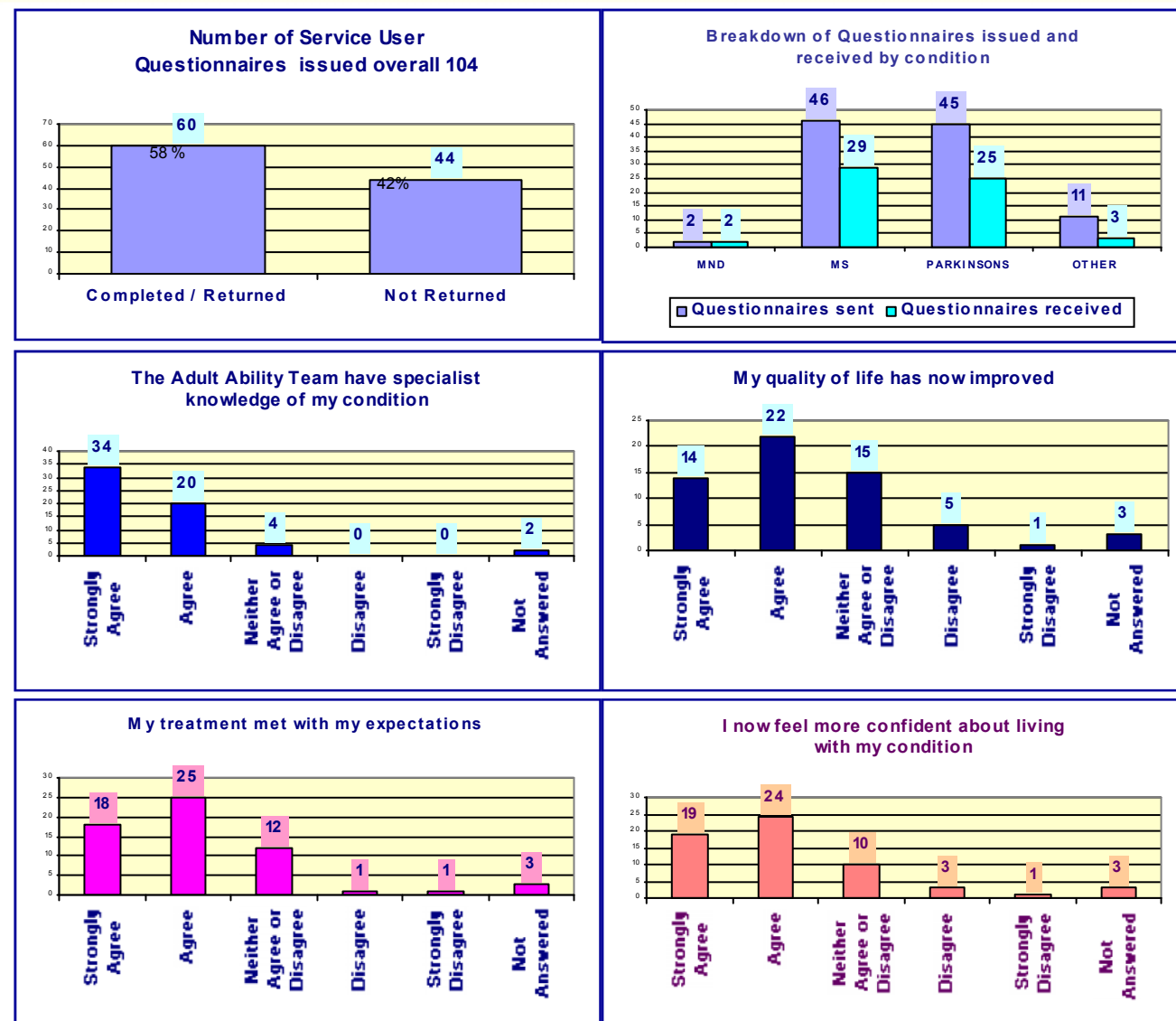


A snap shot of results from our Service User Questionnaire 2012-2013
(only issued following an end of episode of treatment)



A sample of comments received from Service Users who returned questionnaires

- ◆ I personally cannot fault the team. The whole team from the office staff to the operational staff have been most helpful. When I have needed help I have made a telephone call and someone has sorted the problem. Thank you keep up the good work.
- ◆ I have ticked a number of professionals overleaf as I have recently received excellent care from all members of the team. They have all been sensitive, professional, supportive and understanding of my condition. I have in the past 10 years not received treatment to equal this. All members of the team have given me the ability to live confidently and independently with my condition. Many thanks to the whole team- and WELL DONE!
- ◆ The Adult Ability Team do a wonderful job and are a much needed organisation.
- ◆ The services we have received are excellent. Every member of the team we have met have felt like a family.

For further information please contact:

Pam Bostock - Consultant Occupational Therapist for Neurology / Team Lead

Mandy Bradley - Team Administrator

Adult Ability Team, Staffordshire & Stoke on Trent Partnership NHS Trust, Edwin House, Second Avenue, Centum 100, Burton on Trent, Staffordshire, DE14 2WF

01283 507143

“Providing community based Specialist Nursing and Neuro Rehabilitation for
People with Progressive Neurological Conditions in East Staffordshire”

**Close Working
Partners
include:-**



Health & Social Care
Equipment Loan Service
Wheelchair Service
Voluntary Services
Community
Intervention Team
Community Matrons
Queens Hospital
Foundation Trust
St Giles Hospice
ACT Birmingham
Job Centre Plus
MND Organisation
MS Society
Parkinson's Association

Who are we?

- ❖ The AAT is a Specialist Interdisciplinary Neuro Rehabilitation Team. We comprise of Occupational Therapists, Physiotherapists, Parkinsons & MS Clinical Nurse Specialists, Speech & Language Therapist, Dietician, Post Diagnostic Counsellor, Administrator and Clinical Support Worker.

Who do we help?

- ❖ Individuals diagnosed with a progressive neurological condition with a GP in East Staffordshire.

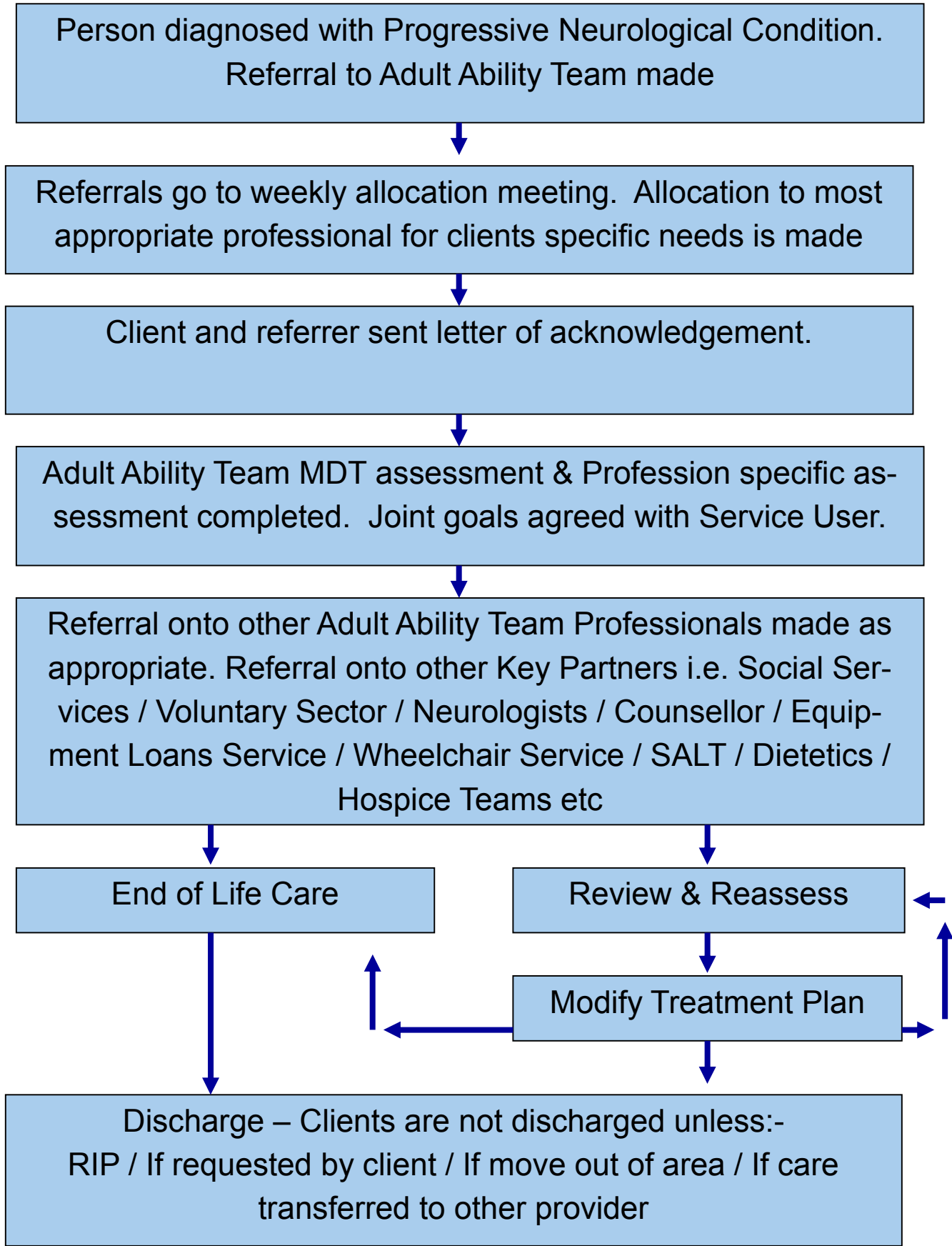
How do we help?

- ❖ Neuro Rehabilitation assessment and treatment of condition from diagnosis throughout its course.
- ❖ We aim to deliver a service which is accessible and responsive to the needs of each individual, their

NEUROLOGICAL REHABILITATION & SPECIALIST NURSING SUPPORT OFFERED BY THE ADULT ABILITY TEAM CONSISTS OF:-

- ❖ Client advocacy / signposting
- ❖ Delivery of Motor/ Non Motor symptom advice and management
- ❖ Specialist medication review including support, advice and information
- ❖ Clinics / Home Visiting / Telephone Support
- ❖ Education for clients / carers / clinicians
- ❖ Assessment and prescription of assistive equipment
- ❖ Psychological support including cognitive coping strategies and stress anxiety management

Service User Clinical Pathway



Evidenced Based Service

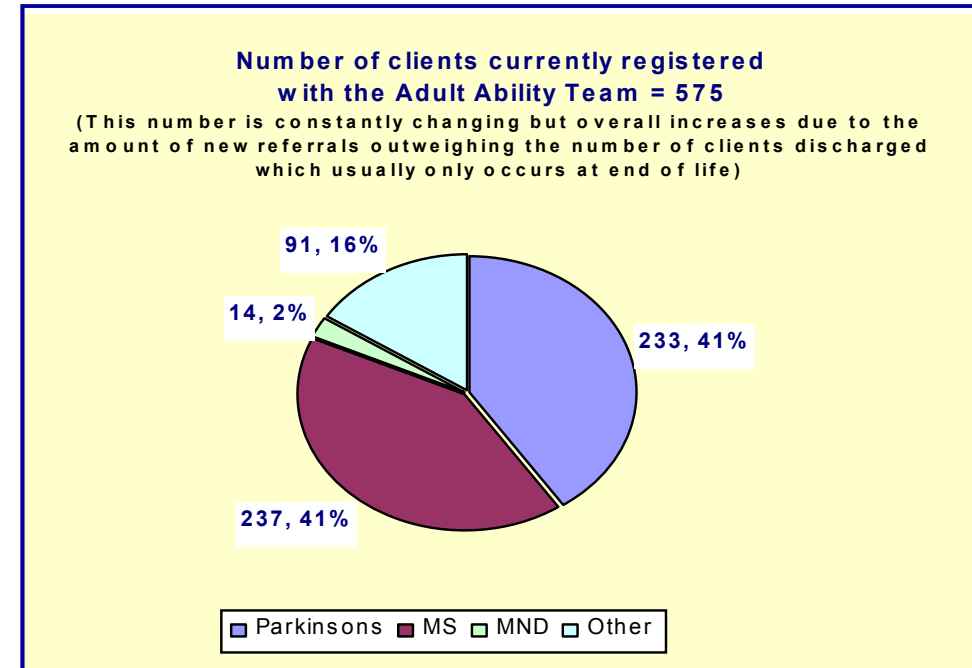
The National Service Framework (NSF) for Long Term Conditions (LTC) and the National Institute for Health & Care Excellence (NICE) recommends that:

“Patients have prompt access to specific neurological experience as close to home as possible” and also stresses the importance of:

“Regular programmes of rehabilitation by suitably trained staff” (Quality requirement 4 of 2005 NSF) Supporting People with Long Term Conditions—an NHS and Social Care Model to support local innovation and integration requires:

“Health & Social Care organisations to work together to support people with Long Term Conditions”

The Adult Ability Team is recognised as a national example of good practice - “Department of Health Commissioning document” (Commissioning Services for People with Long Term Neurological Conditions—April 2007).



NB: It has been suggested that there will be an anticipated 25% increase in people diagnosed with Parkinsons and Motor Neurone Disease in the next 5-10 years from 2012 onwards. (Sourced:- All Party Parliamentary Review of Long term Neurological Conditions 2012). We are already seeing this increase.

<u>Progress made over recent year</u>	<u>Challenges ahead</u>	<u>Plans for service Developments</u>
<ul style="list-style-type: none"> Received Best practice Award from Staffordshire Neurological Alliance Forged greater links with voluntary sector Self management programmes and educational events Completed research Agreed outcome measures for CQUINS Gained greater service user opinion Contribution to national documents 	<ul style="list-style-type: none"> ↑ unscheduled visits Integration with social care / case management agenda ↑ in progressive neurological conditions in next 5-10 years (PD/MND estimate by 25%) 	<ul style="list-style-type: none"> Keep adequate data—inform commissioners Analyse and develop current practice as a team with service user intelligence Continue to develop self management strategies to increase service user skills and confidence and decrease dependency on traditional NHS services